

Manuel 240 of Claiborne Parish

240.00 Acres / \$931,700.00

The Manuel 240 of Claiborne Parish is 240 acres of prime timberland. . The price is \$ 931,700



PINEY WOODS
REAL ESTATE®

1-844-GO-PINEY
www.pineywoodsrealestate.com

jay@pineywoodsrealestate.com
Office: 1-844-467-4639
Cell: 1-318-455-0373
Fax: 1-318-539-2731

Jay Hearnberger
P.O. BOX 792
Springhill, LA 71075



Manuel 240 of Claiborne Parish Aerial



PINEY WOODS
REAL ESTATE®


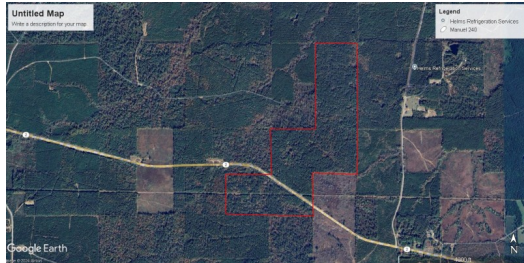
1-844-GO-PINEY
www.pineywoodsrealestate.com

jay@pineywoodsrealestate.com
Office: 1-844-467-4639
Cell: 1-318-455-0373
Fax: 1-318-539-2731

Jay Hearnberger
P.O. BOX 792
Springhill, LA 71075




Manuel 240 of Claiborne Parish Images



1-844-GO-PINEY
www.pineywoodsrealestate.com

jay@pineywoodsrealestate.com
Office: 1-844-467-4639
Cell: 1-318-455-0373
Fax: 1-318-539-2731

Jay Hearnberger
P.O. BOX 792
Springhill, LA 71075



Manuel 240 of Claiborne Parish Details

Hwy
Summerfield, Louisiana 71979

Longitude: -92.93860697
Latitude: 32.94341965

Electricity: ;
Gas:
Waste:
Water:
Services:

Activities:

Acres: 240.00

Fencing: NO
Trees:
Waterfront:
Adjacent Owner:
Road Surface:
Terrain:




jay@pineywoodsrealestate.com
 Office: 1-844-467-4639
 Cell: 1-318-455-0373
 Fax: 1-318-539-2731

Jay Hearnberger
 P.O. BOX 792
 Springhill, LA 71075

1-844-GO-PINEY
 www.pineywoodsrealestate.com

Manuel 240 of Claiborne Parish Vicinity (Zoomed Out)



PINEY WOODS
REAL ESTATE®

1-844-GO-PINEY
www.pineywoodsrealestate.com

jay@pineywoodsrealestate.com
Office: 1-844-467-4639
Cell: 1-318-455-0373
Fax: 1-318-539-2731

Jay Hearnberger
P.O. BOX 792
Springhill, LA 71075



Manuel 240 of Claiborne Parish Vicinity (Zoomed In)



PINEY WOODS
REAL ESTATE®

1-844-GO-PINEY
www.pineywoodsrealestate.com

jay@pineywoodsrealestate.com
Office: 1-844-467-4639
Cell: 1-318-455-0373
Fax: 1-318-539-2731

Jay Hearnberger
P.O. BOX 792
Springhill, LA 71075

